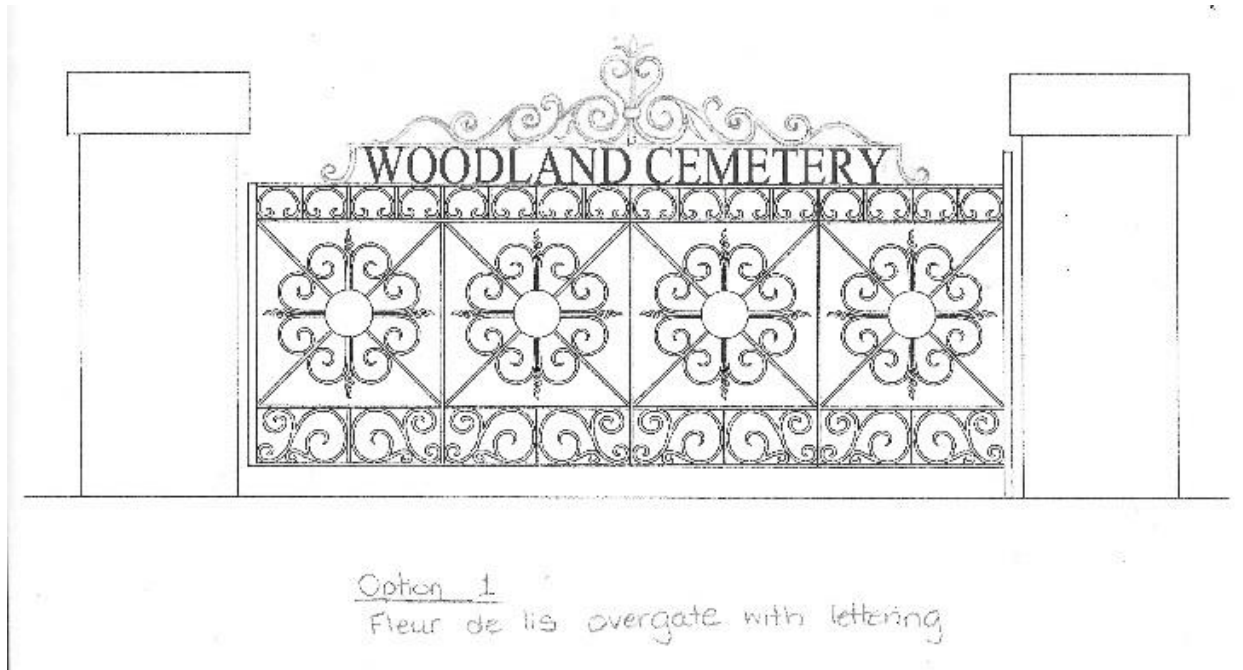


Woodland Cemetery Gate

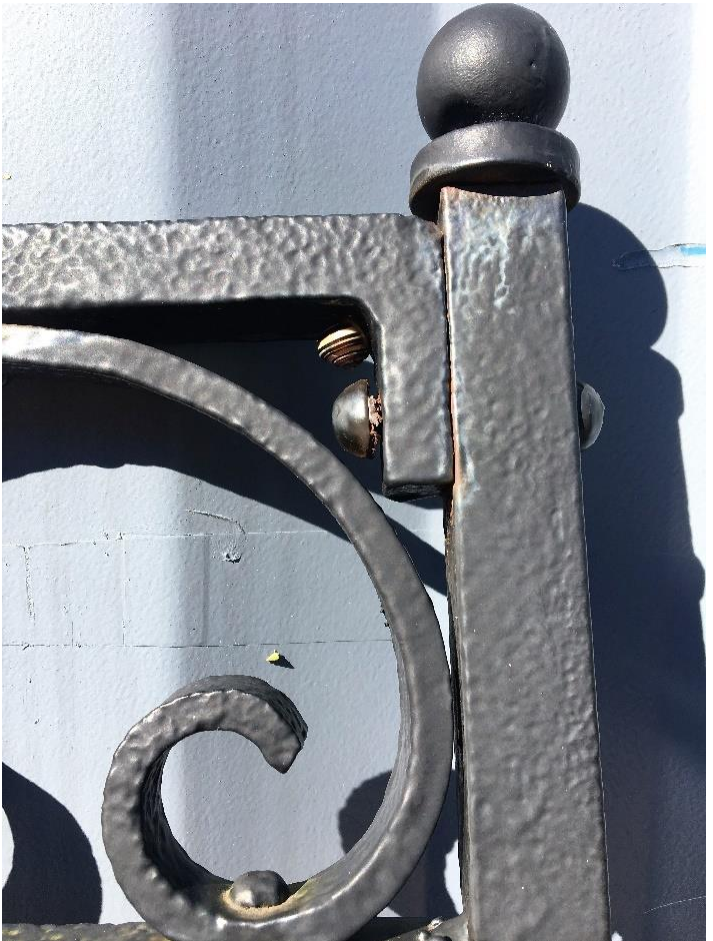
A Case Study



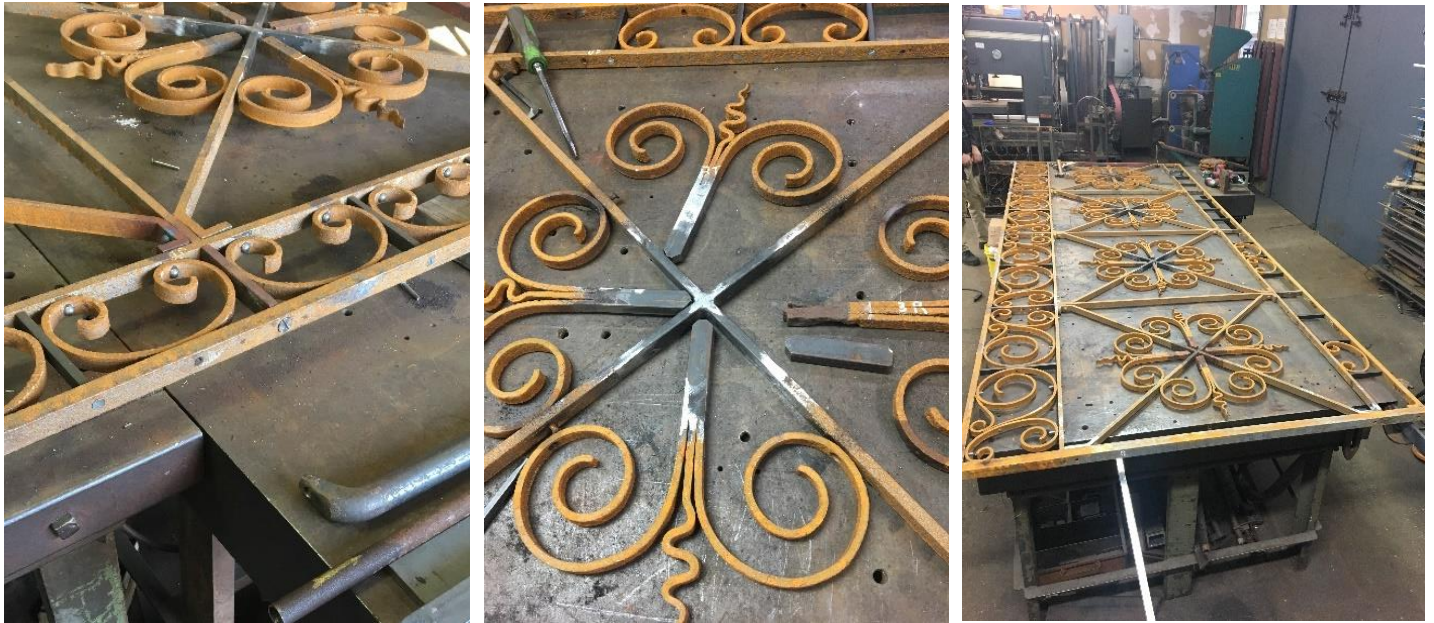
After winning a design competition for a custom one of a kind sculpture for the village of Bellport, Spirit Ironworks was commissioned to perform a complete restoration of the Woodland Cemetery Gate.



After over a century of service this well-crafted piece of ironwork was in dire need of restoration. Constructed before the invention of electric welding, every joint was either riveted or screwed together. Over time rust has crept into these joints and pushed them apart or completely disintegrated them. After recognizing the quality of work that Spirit Ironworks was able to accomplish with the sculpture, the Village knew the Cemetery Gate would be in good hands.



Here we can see the amount of wear the Gate has sustained over the years, including the Cast Iron rosettes that were severely damaged. Understanding how intensive this restoration was going to be, Spirit Ironworks began the process of carefully removing the gate. Once taken down, the gate was sandblasted to get rid of the paint and reveal the true extent of the damage. After this was completed the underlying damage to the gate was worse than expected.



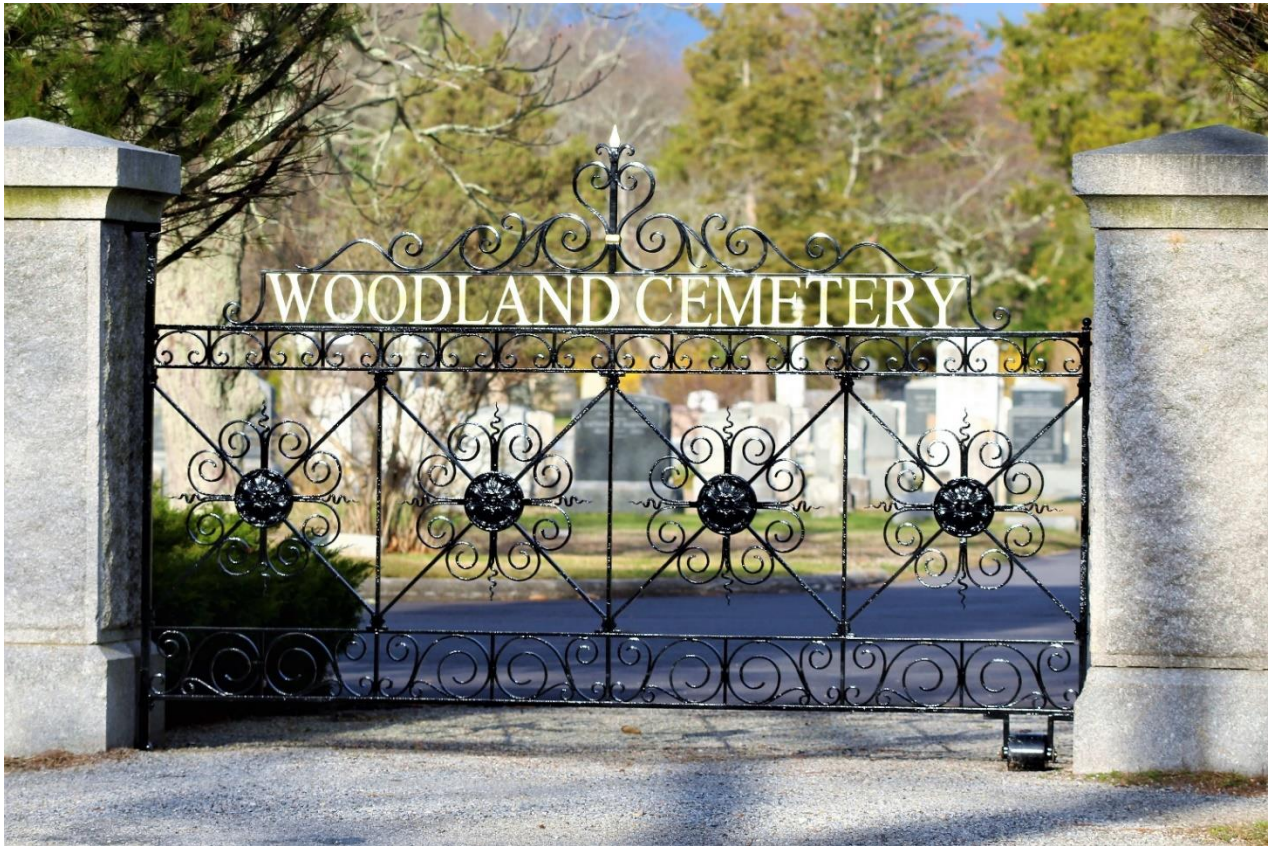
Corrosion had weakened the majority of the rivets and screws holding the gate together. All these fasteners had to be removed, the bars straightened, and corroded areas filled, or new material spliced into the bars where the corrosion has compromised the material. The gate was then reassembled using temporary bolts which were then replaced one by one with the period correct fastener.



One of the things that many people may not understand about ironwork from this period, is the great expense and care that went into its construction. In general, older ironwork has a greater variety of decorative elements and design features. For example, the cast iron medallions are actually structural elements of the gate. They secure the scrollwork and strengthen the centerline of the gate. Cast iron is extremely difficult to repair and needs to be approached very carefully as it can become brittle and crack if not heated and cooled properly.



Inspired by the Lakeview Cemetery restoration, we were asked to design and forge a decorative frieze to be attached atop the gate. Being the main entrance to the cemetery, the committee felt that the gate should be more visually striking. The new frieze has the historical cemetery's name in genuine gold leaf to adorn the top of the gate.



After many hours of extensive restoration by Spirit Ironworks, the Beautiful Woodland Cemetery Gate is ready again for decades of service.